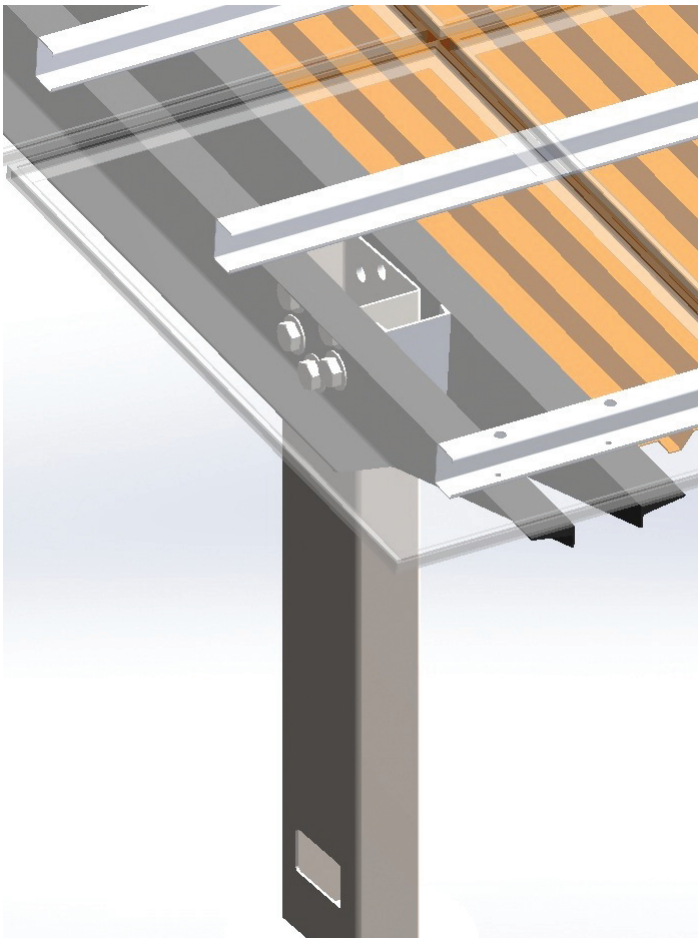


# PRP

## SOLAR CAR PORT

The PRP solar carport system is a solar canopy solution that is highly configurable, easy to assemble and cost effective. With single, double, and large span options, it is the industry's most versatile solar car port solution.

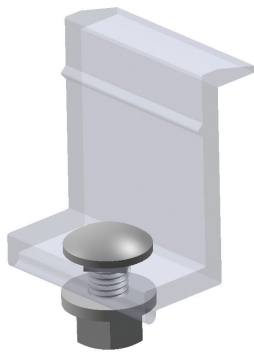


## KEY PRODUCT BENEFITS

- Complete turn-key solution including foundation, engineering, and installation
- Ease of maintainability and assembly (no on-site fabrication)
- Designed to custom fit different parking configurations

## KEY TECHNICAL FEATURES

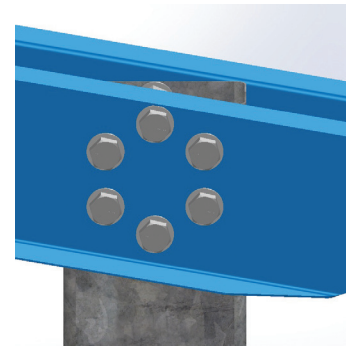
- Single row, double row options
- Mono-Slope, Pitched Dual Slope, Through Dual Slope design options
- Durable galvanized steel construction (G90-G235)
- Corrosion resistant hardware (SS, Magni-Coated, Hot-Dip-Galvanized)
- Mid-Clamps with integrated bonding and built-in wire management system
- Custom tilt angles
- Bird control and water management options
- 8' minimum clearance (higher available)
- Custom colours
- Raised concrete piers (optional)
- Optimized span between posts (2-4 Stalls)
- Multiple foundation solutions
- Custom designed to geographic loads and local building codes
- Engineering field support



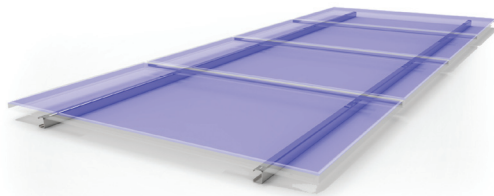
End Clamp



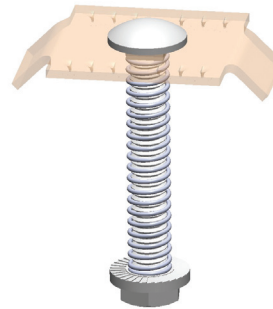
Hemispherical Angle Adjustment  
for Grade Slope



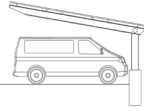
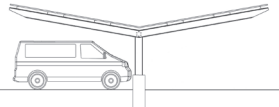
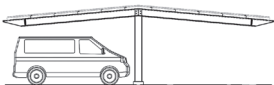
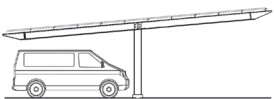
Adjustability



Prepopulated Module Option



Quick Midclamp with  
Integrated Bonding

IMAGE	MODEL	DESCRIPTION
	<b>PRP-1</b>	Polar Car Port, Single Row
	<b>PRP-2T</b>	Polar Car Port, Double Row, Through Slope
	<b>PRP-2P</b>	Polar Car Port, Double Row, Pitched Slope
	<b>PRP-2M</b>	Polar Car Port, Double Row, Mono Slope



This document does not create any express warranty by Polar Racking or about its products or services. Polar Racking's sole warranty is contained in the written product manual for each product. The end-user documentation shipped with Polar Racking's products constitutes the sole specifications referred to in the product warranty. The customer is solely responsible for verifying the suitability of Polar Racking's product for each use. Subject to change without notice. Last update, October 2014.

1.416.860.6722

[www.polarracking.com](http://www.polarracking.com)